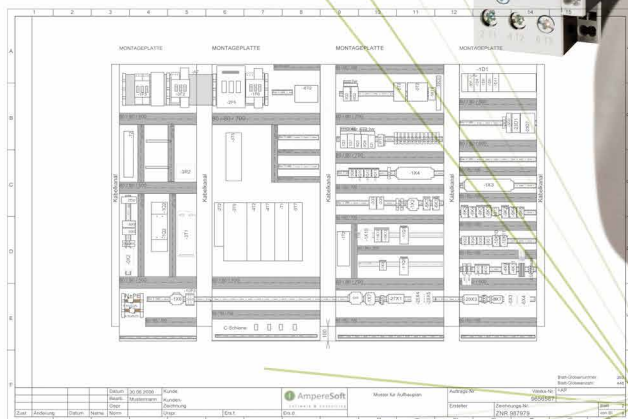
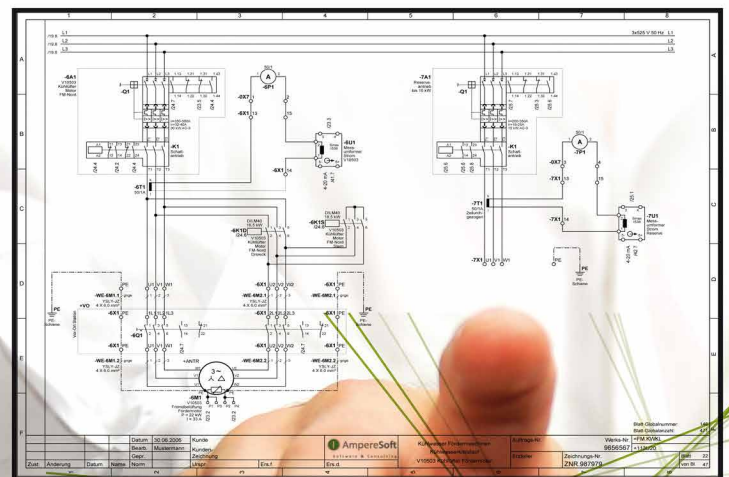


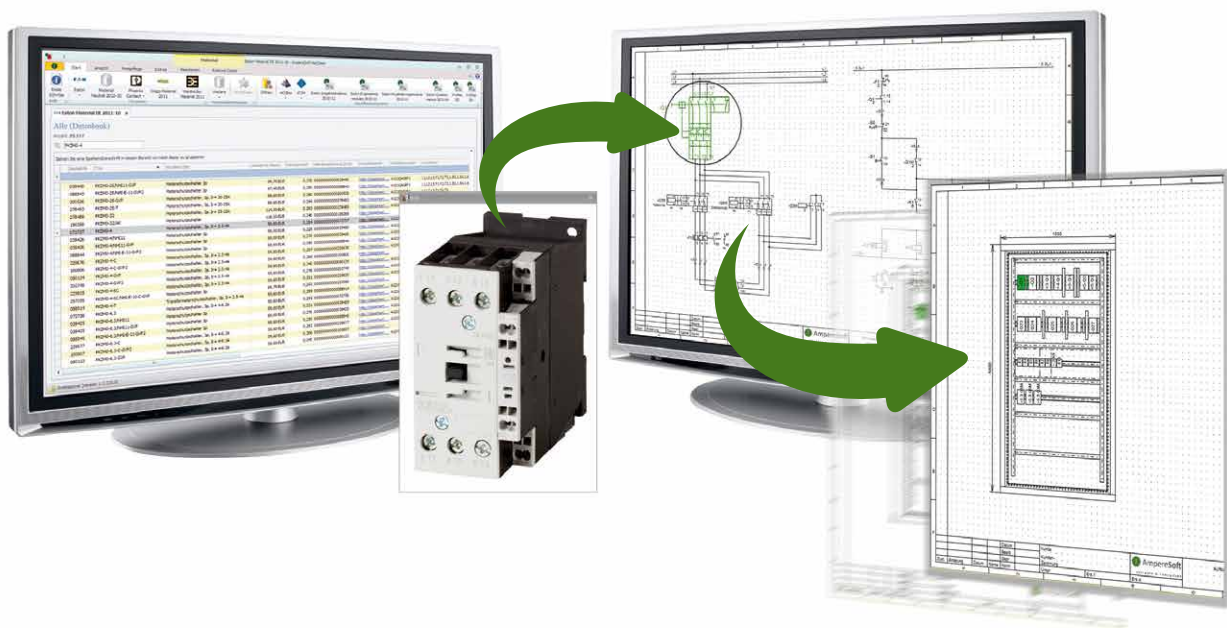


## Reach Your Goal Faster with AmpereSoft ProPlan

- › faster planning
- › ultrafast information
- › reliable in every detail

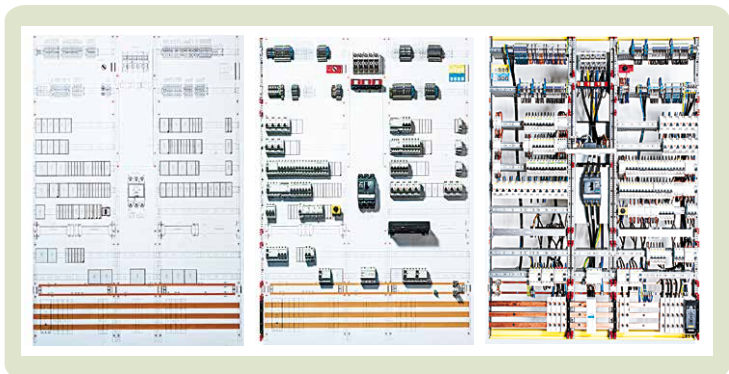


# AmpereSoft ProPlan – The Key Highlights at a Glance



**Whether in electrical engineering, energy, controller and automation technology, or in HVAC technology: AmpereSoft ProPlan is the powerful engineering tool for many sectors.**

- › The seamless and cohesive object-oriented operating method drastically reduces your engineering time. This enables practical and user-friendly functions that guide you quickly and reliably to the required plan types.
- › The variety and flexibility of the material search using technical features in the material database ensures fast searching and enables you to find the right equipment.
- › The security provided for the user with the material exchange function for equipment is unique. The connections of the exchanged material are checked automatically for identical functions. This ensures that material is exchanged quickly and correctly.
- › The consistent system structure and management for every individual item of equipment simplifies localization for engineering and operating the system.
- › Data exchange is not a problem. The wide range of interfaces enables data to be exchanged with upstream or downstream IT systems.



**Reliable in every detail**

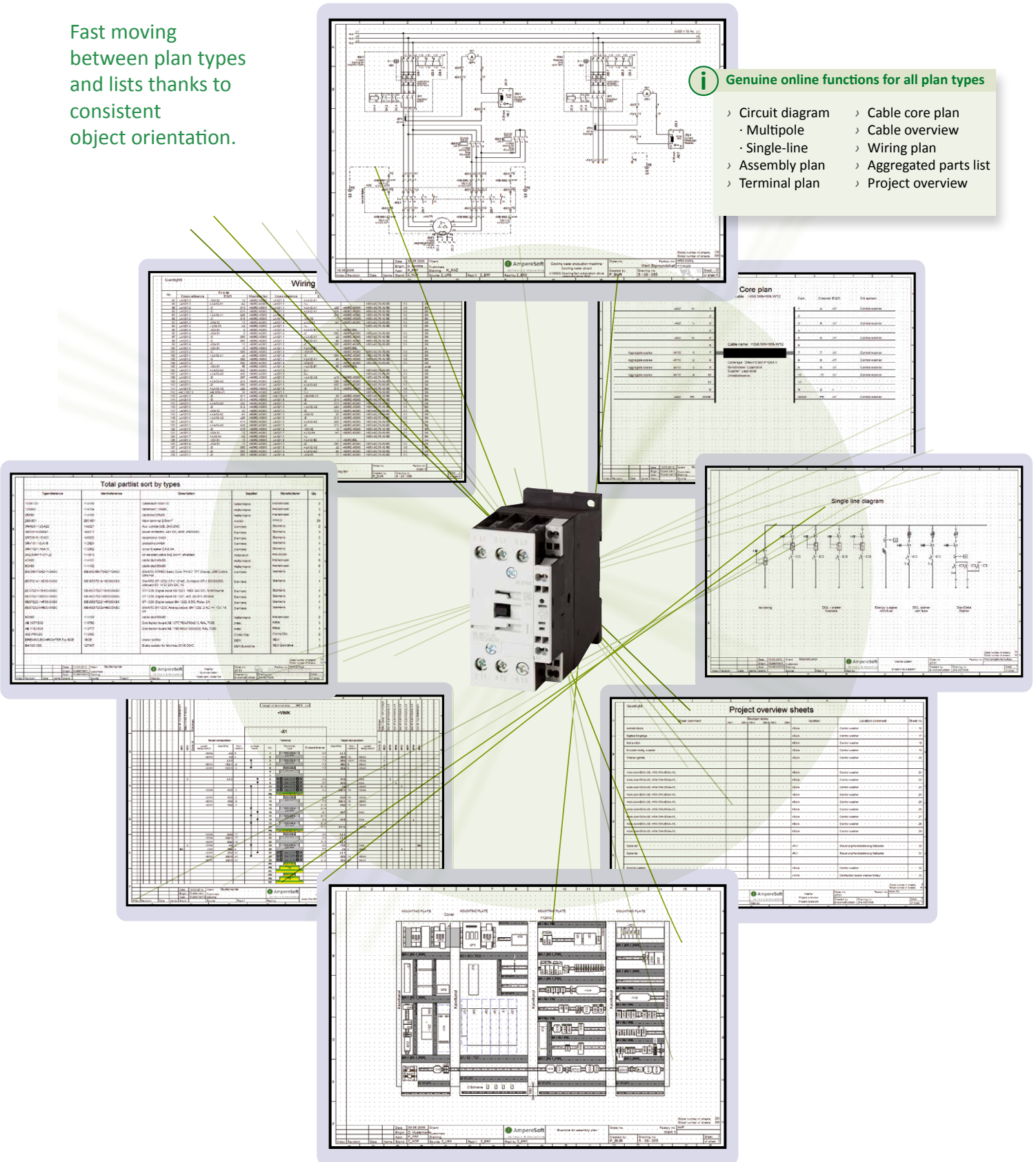


Outstanding online functionality without post-processing offers an up-to-date display of all plan types at any time.

Fast moving between plan types and lists thanks to consistent object orientation.

### Genuine online functions for all plan types

- › Circuit diagram
- › Multipole
- › Single-line
- › Assembly plan
- › Terminal plan
- › Cable core plan
- › Cable overview
- › Wiring plan
- › Aggregated parts list
- › Project overview

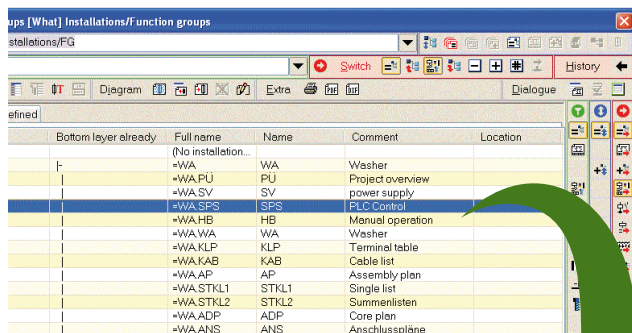




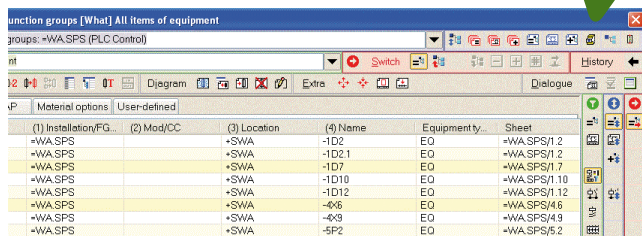
# AmpereSoft ProPlan – Key Functions at a Glance

## Project Explorer

- › The Explorer enables the multiple selection and changing of data such as content, assignments to locations and texts in the selected hierarchical level.



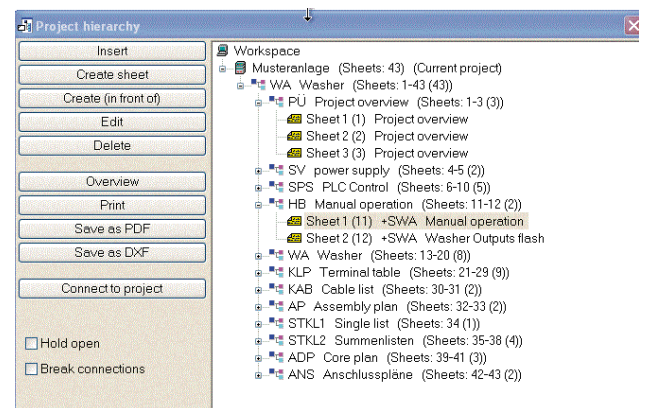
Levels of a structure



Subordinate structure of the "PLC controller" function group

## Seamless structuring for large projects with any number of levels

- › The project management function enables projects to be structured to DIN EN 61346-1 in any number of levels. This complete overview of the project hierarchy in a tree structure with direct links to the relevant plan types therefore speeds up the planning process.



## System requirements

- › Pentium PC with 1GB RAM  
Recommended: 3GB RAM
- › VGA 1280x1024 pixels  
Recommended: 2 screens  
each with 1280x1024 pixels
- › Operating system:  
Microsoft™ Windows  
XP®, Vista®, Windows7®,  
Windows8®

Up to 2GB free hard disk space  
required, depending on type of  
installation.

## AmpereSoft ProPlan – Key Functions at a Glance:

Function	Features	User benefits
Genuine online functions	No post-processing	Up-to-date display at any time
Genuine object utilization	Cohesive display in all plan types	Modification at one point causes the modification in all displays
Material structure oriented method	Devices and material combinations can be taken directly from the database and used in the plans	All parts with properties are available immediately in the parts list
Project management	Project structuring to DIN EN 61346-1 in any number of levels	Seamless structuring with all project sizes
Material database	Continuously updated manufacturer databases and neutral material data	List output with actual products and data
Material exchange	Individually, subareas or over the entire project	Optimum flexibility with types or change of manufacturer during project engineering
Project Explorer	Multiple processing of all objects with the Project Explorer	Convenient processing of large projects
Graphic symbols to EN/DIN, IEC	Extensive symbol library, create your own symbols	Time saving, clear, unambiguous display possible
Assembly plan	Easily created through Wizard functions Online relationship to circuit diagram	Bidirectional identification to circuit diagram, time saving
Single-line diagram	Direct relation to multipole circuit diagram	Automatic update in the event of changes
Other plan types such as terminal, cable, parts lists, and overviews	Available online by mouse click to evaluate the circuit diagram	Always up-to-date
Potentials management	Cross-system, linked, star	Clear overview, wiring support
Modules	For wired switchgear and controlgear assemblies and standard circuits	Fast compilation of documentation
Efficient copy functions	The versatile copy options enable selected elements or sections to be copied logically	Reach your goal faster with modular copying
Foreign languages	All texts can be displayed in any language by mouse click (Unicode capable)	Worldwide use possible
Creation of dimension diagrams	Automatic creation of device dimension diagrams based on the dimension entries in the database	Time saving
Assignable terminal connections	Decentralized assignment and placing of terminal connections possible	Greater clarity during engineering
Graphic interfaces	DXF, VNS, PDF, BMP, JPG, TIF	Seamless connection with other graphic programs
Interface to drilling machines	Graphic features can be read in directly by the drilling machines of Kiesling and Steinhauer	Seamless workflow
Wiring output	Cable assembly via the CadCabel interface	Makes work easier Production process optimization
Marking / label printout	Data transfer to device/terminal labeling software of various manufacturers	Benefit during manufacturing
Management of PLC texts	Of all manufacturers through direct importing and exporting of the assignment lists	Makes work easier by preventing duplicate entries

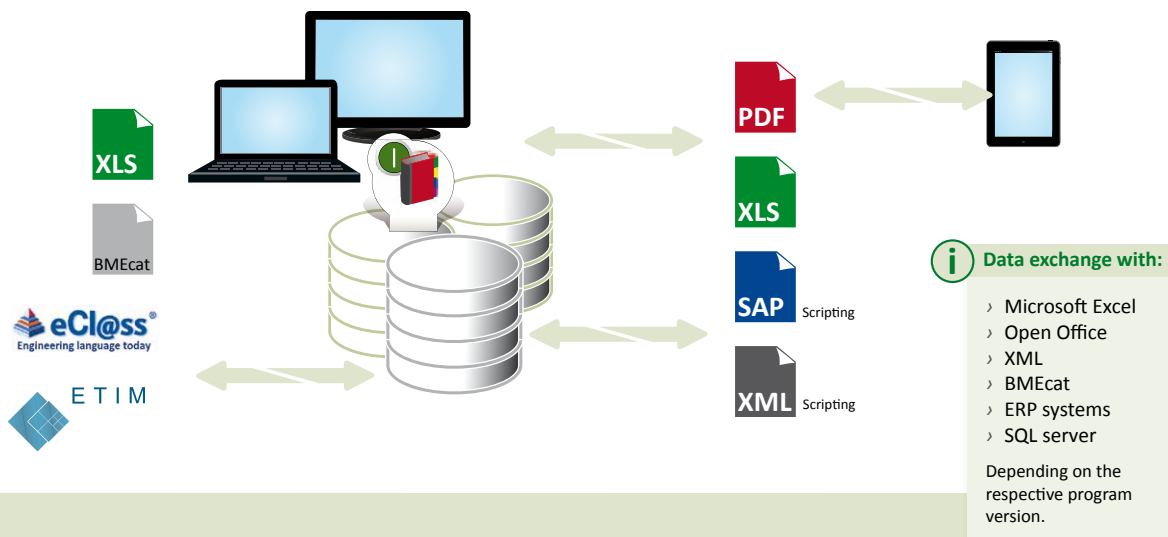
# AmpereSoft MatClass – Maintenance and Management in Collaboration with ProPlan

The professional MatClass material management and material maintenance program is part of the ProPlan software tool.

## Special features

- › Ergonomic and practically oriented maintenance and management of material catalogs and projects.
- › Fast finding of the right equipment thanks to multiple search options, user-friendly filters and clear grouping of any material properties.
- › Simple and fast location of identical objects using the bidirectional search.
- › The possibility to create individual device combinations from individual components simplifies engineering with complex equipment and systems.
- › Work with multiple material databases simultaneously or design your own material database with favorite equipment.
- › AmpereSoft MatClass can be remotely controlled via COM/.Net interfaces and the scripting module. This allows individual adaptations to be made to your business process.

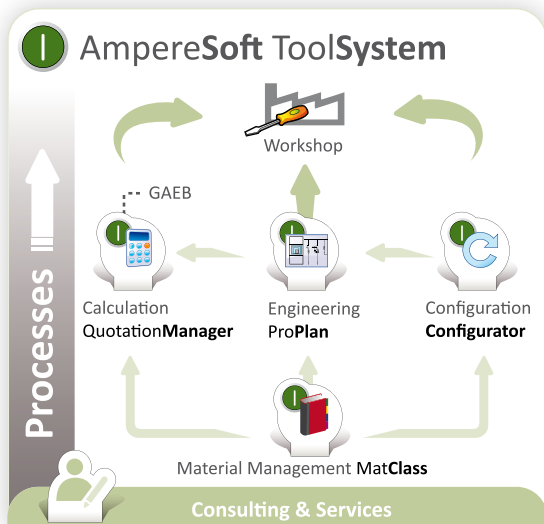
## Data exchange with AmpereSoft MatClass





## AmpereSoft MatClass – Key Functions at a Glance:

Function	Features	User benefits
Material search	Possible in any database field	Fast finding of equipment
Various filter options	Filters, multiple filters and linked filters possible for any field of the database	Fast selection of products and their properties
Class and synonym search in eCl@ss and ETIM	Use of standard classification systems eCl@ss + ETIM in accordance with their license conditions	Fast finding of products Possible for different manufacturers
Drag/drop functionality	With ProPlan (and other AmpereSoft software tools)	Enables efficient working
Individual screen layout	Set and stored for different requirements	Faster and more practical work
Grouping	Grouping of any fields of the database	Enables the fast overview of products with the same properties
Material combinations	Formed and managed to individual requirements	Simple handling of complex products
Customized databases	Databases with user-defined favorite materials	Fast finding of favorite materials
User-defined article number	Management of user-defined article numbers, import and export via MS Excel also possible	Fast finding and simple integration possible in custom processes
Favorites database	Management of favorites databases	Direct selection of frequently used databases
Hyperlinks such as to product data sheets of manufacturers	Can be processed as property values	Additional product information in online access
Online screen display	Direct screen view for the selected article – can be deactivated	A picture says more than a thousand words
Symbol preview	View symbols for circuit diagram and assembly plan in advance in AmpereSoft ProPlan	Simplifies material selection
Print / export material list	Print out material list for project or export as document (PDF, HTML, CSV)	Simplifies the submission to further processes
Comparison of databases	Update databases and supplement with additional information	Simple data transfer to downstream IT systems
Extensive import interfaces	Microsoft Excel, ASCII, BMEcat (picture files and hyperlinks as property values)	Simple and convenient data update or transfer
Extensive export interfaces	Microsoft Excel, ASCII (hyperlinks as property values)(optionally XML and ERP systems)	Simple data export for use in other IT systems
Price maintenance and management	Keep list/net prices and discounts up-to-date	Simplifies the price overview
Multiple languages supported	Unicode for operator interface and data content of the material database	Simplifies collaboration with international customers and colleagues
User-defined classification systems	Maintenance and management of user-defined classification systems and properties	Simplifies access to corporate-specific classification
Scripting module option	Extension and adaption of program functions	Implementation of customized interfaces



## Optimize your engineering & your processes

The process-oriented AmpereSoft ToolSystem enables you to optimally coordinate your engineering and your processes.

On request, we will analyze your master data, engineering and production processes in order to identify potentials in your company.

We advise you on how your data flows can be harmonized and structured to achieve the smooth operation of your processes.

## AmpereSoft

Software & Consulting

AmpereSoft GmbH  
Jonas-Cahn-Straße 13  
D-53115 Bonn

Tel. +49 (0) 228 608847-0  
Fax +49 (0) 228 608847-49  
Email [info@amperesoft.net](mailto:info@amperesoft.net)

### Support

Tel. +49 (0) 228 608847-47  
Fax +49 (0) 228 608847-49  
Email [support@amperesoft.net](mailto:support@amperesoft.net)



## AmpereSoft – Consulting and tools by professionals for professionals

AmpereSoft is an innovative company with decades of experience and specialist know-how in the field of engineering tools and master data processes.

The company was founded in 2007 by employees from the former Moeller Engineering Tools business unit. From Moeller, AmpereSoft assumed the rights to various software tools, such as ProPlan (CAE33 successor). Since then the tools have been further developed as vendor-neutral products and marketed internationally. The process-oriented product and service portfolio is being extended continuously.

AmpereSoft actively supports the further development of the eCl@ss classification standard and is an authorized eCl@ss service provider.

Benefit from our strength of connection between business process requirements and the essential tools and services.

We power your engineering & processes.

[www.amperesoft.net](http://www.amperesoft.net)