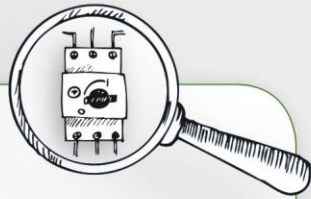


MatClass DataManagement

Convenient data maintenance – easy deployment



Product data
down to the last detail



Presentation
clear and customizable



Classification systems
standardized or custom-made



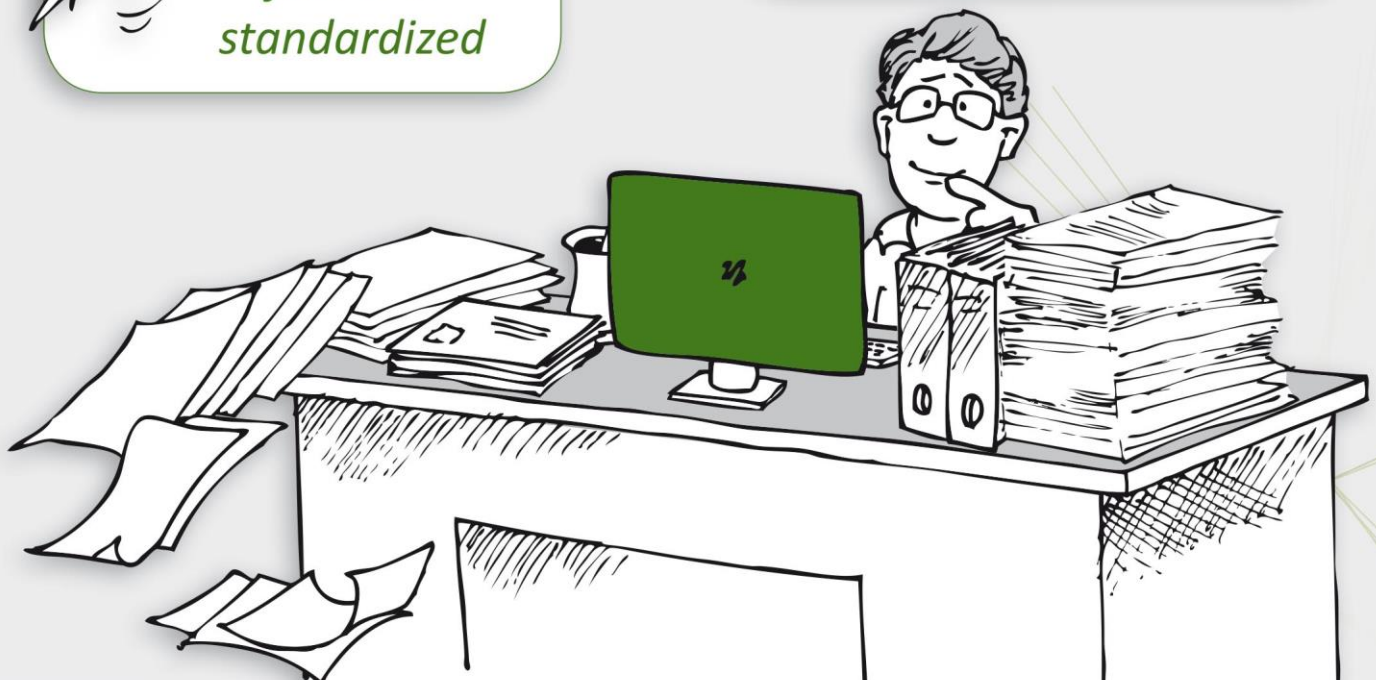
Data transfer
configure flexibly



Data export
fast and standardized



Customer specific features
add them at any time



We power your engineering & processes.

www.amperesoft.net

Your request:

Maintenance of your master data shall be **easy – down to the last detail**.

And providing the **right data** to your customers has to be **fast** and in a **standardized format**.

Standardized and **customer-specific classification systems** shall be used.

Internal business processes have to be supported by a **flexible data transfer** and by creating **customer specific features**.

Our solution:

MatClass DataManagement

- **Easy operation**, efficient mass maintenance functions and the possibility of versatile, detailed data structuring of the database system - **MatClass will revolutionize your data maintenance!**
- **The open and flexible database system** provides the using of different standardized classification systems like **eCl@ss (incl. ADVANCED 9.0!)** and **ETIM** as well as the **integration of company specific classifications**.
- **Diversified interfaces** provide a rapid exchange of data between you and your clients or suppliers.
Formats: Excel, ASCII, Eldanorm, Datanorm, Access and BMEcat (2000-2005.1), etc.
- **The open Application Programming Interface (API)** for the remote control of MatClass by any Microsoft.Net Windows applications ensures a **flexible connection to your company's systems** (for example ERP).
- **AmpereSoft MatClass DataManagement eCl@ss ADVANCED**
AmpereSoft creates a basis for the rapid and economic implementation of the electric engineering process.
The eCl@ss ADVANCED classification standard is implemented in its entire complexity which includes structuring of characteristics in aspects and blocks and the usage of cardinality and polymorphism.
This allows, among others, an automatic generation of assembly plan and circuit diagram symbols. The exchange of data by BMECat 2005.1 is provided by various CAE system manufacturers.
eCl@ss ADVANCED is an open, system independent foundation for the exchange of data between component manufacturers and CAE systems.

AmpereSoft GmbH

Tel.: +49 228-608847-0

Fax: +49 228-608847-49

Email: info@amperesoft.net